

# PIM-PF - Pesquisa Industrial Mensal - Produção Física

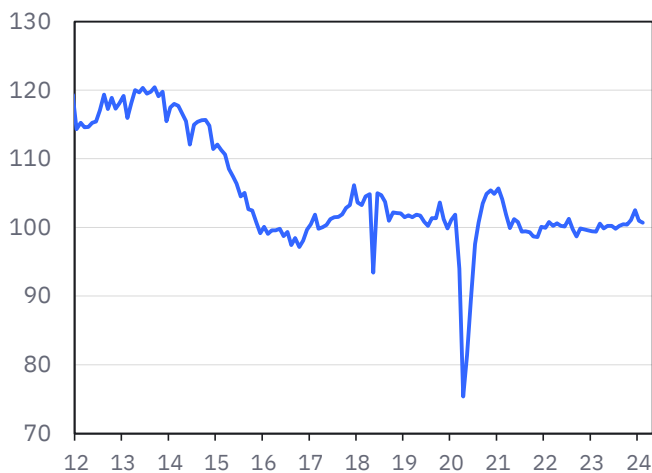
Mês de referência: Fevereiro/2024

Publicação: Qua. - 3 Abr. 2024

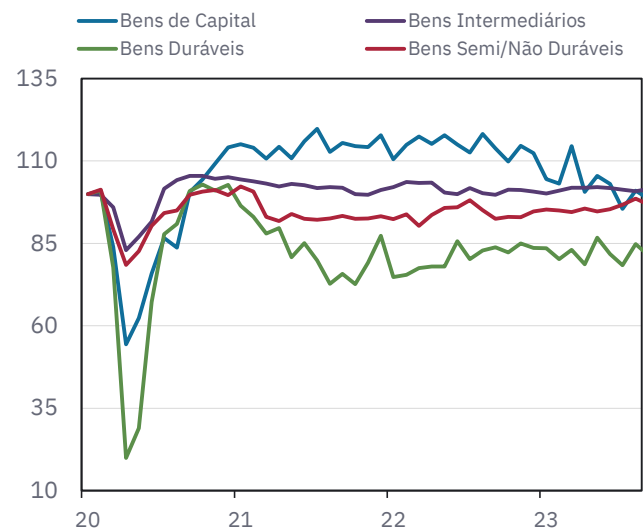


	MoM (SA)			YoY (NSA)			QoQ Avg. (SA)		
	Dec-23	Jan-24	Feb-24	Dec-23	Jan-24	Feb-24	Dec-23	Jan-24	Feb-24
1. Indústria Geral	1.5%	-1.5%	-0.3%	0.9%	3.7%	5.0%	1.2%	1.1%	0.7%
2. Indústrias Extrativas	3.8%	-6.9%	-0.9%	17.5%	6.9%	5.3%	5.4%	5.2%	0.7%
3. Indústrias de Transformação	0.4%	0.0%	0.0%	-2.3%	3.1%	4.9%	0.4%	0.2%	0.5%
Bens de Capital	-0.4%	9.3%	1.8%	-15.8%	1.7%	5.3%	-0.8%	0.8%	5.6%
Bens Intermediários	1.8%	-2.7%	-1.2%	3.6%	4.5%	5.1%	2.7%	2.6%	0.8%
Bens de Consumo Duráveis	6.6%	1.5%	3.6%	-0.8%	1.1%	9.3%	-1.6%	-0.5%	6.3%
Bens de Consumo Semi e Não-Duráveis	-0.2%	-0.4%	0.4%	-0.7%	3.4%	4.8%	-0.6%	-0.7%	-0.2%
Insumos da Construção Civil	1.1%	0.9%	-2.0%	2.1%	4.6%	5.2%	-0.1%	1.4%	1.5%

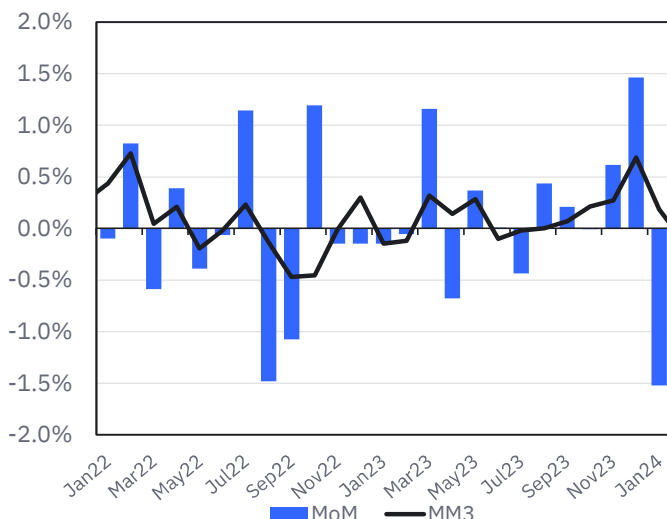
### Indústria Geral (Índice SA, 2022=100)



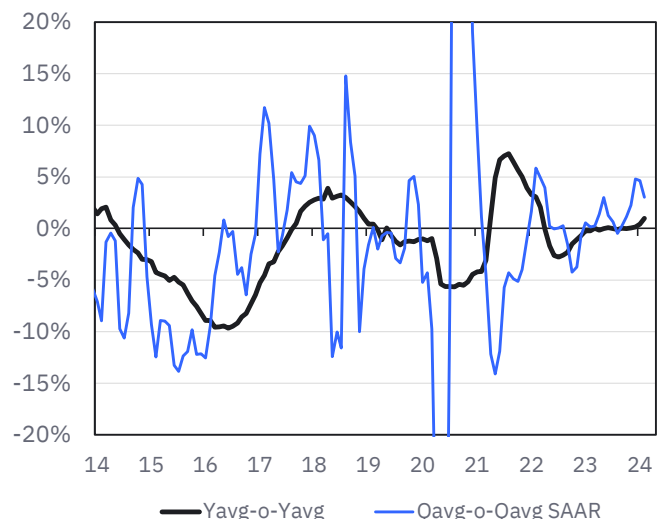
### Grandes Categorias Econômicas (Índice SA, 2020=100)



### Indústria Geral (MoM SA vs. MM3 SA)



### Indústria Geral (Yavg-o-Yavg vs. Qavg-o-Qavg SAAR)



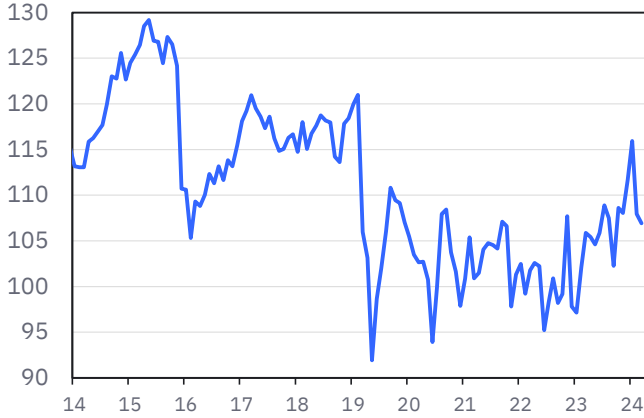
# PIM-PF - Pesquisa Industrial Mensal - Produção Física

Mês de referência: Fevereiro/2024

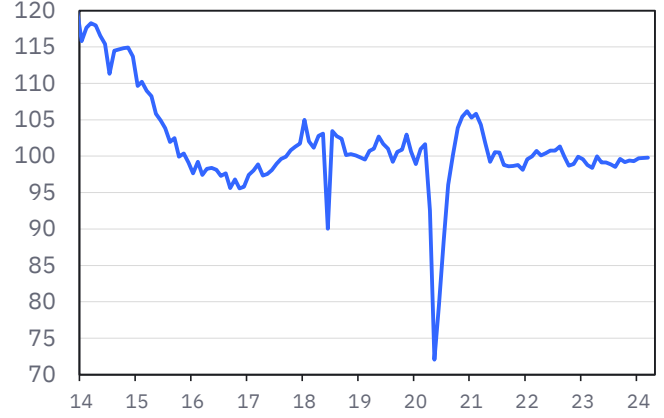
Publicação: Qua. - 3 Abr. 2024



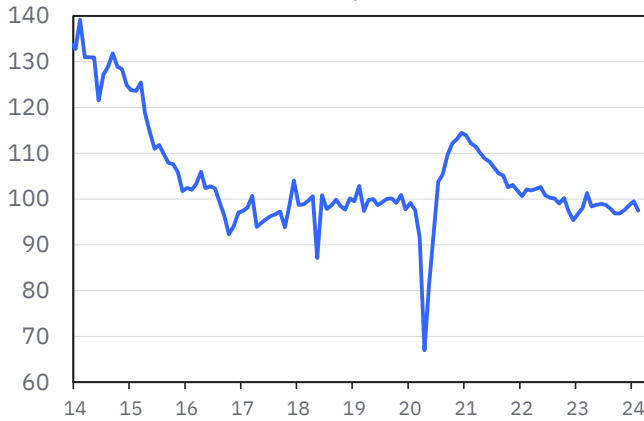
**Indústrias Extrativas**  
(índice SA, 2022=100)



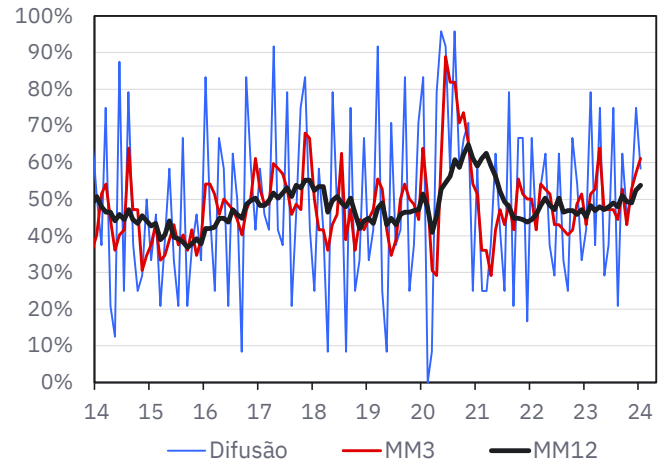
**Indústrias de Transformação**  
(índice SA, 2022=100)



**Insumos da Construção**  
(índice SA, 2022=100)



**Atividades Industriais - Difusão (SA)**



**Pesquisa Industrial Mensal - Produção Física - Atividades (%MoM)**

